

## Datasheet

### LIONTRON LiFePO4 Smart BMS 12.8V 150Ah under seat

#### Drop-In replacement for lead acid batteries with maximum service life.

LIONTRON LiFePO4 batteries are a full 12V lead acid battery replacement with all the advantages of lithium iron phosphate. It offers a significant weight reduction, enormous energy reserves and stable voltage even under extreme loads.

The storage battery has been specially developed to fully meet the high demands placed on a storage battery today. Highest safety and a long life span are guaranteed even with regular deep discharges thanks to the latest lithium technology. It enables an extremely high cycle life (over 3000 cycles at 90% DoD) and makes the LIONTRON® batteries the optimal traction battery.

The battery is only suitable for 12V installation. A parallel connection to increase the capacity is possible (serial connection to e.g. 24V is not possible).



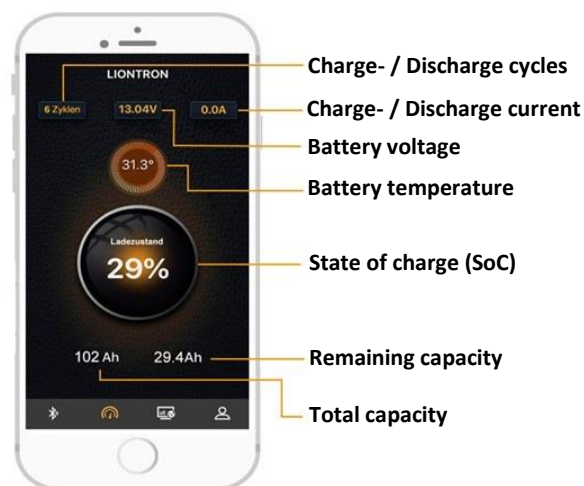
#### Integrated Bluetooth monitoring.

#### Always know your battery status.

With the integrated Bluetooth 4.0 monitoring, you always have all important battery data in view on your smartphone or tablet. Among other things, the app displays the following data in real-time:

- Battery state of charge in % (SoC)
- Battery voltage
- Charge / discharge current
- Remaining capacity
- Battery temperature
- Number of charge / discharge cycles
- Rated- / capacity

To connect the battery and a smartphone / tablet, the device must support Bluetooth version 4.0.



#### Secure lithium technology.

#### Absolutely safe and maintenance free.

Our batteries are based on lithium iron phosphate technology (LiFePO4). This is currently the safest lithium technology. In addition, our customized housings and electronics increase safety and durability. Each battery consists of a high-performance lithium iron phosphate (LiFePO4) accumulator and an integrated battery management system, or BMS for short.

This constantly monitors the status of the individual cells and protects them against overcharge, overvoltage and overtemperature, among other things. Early failure of the storage tank due to environmental influences or incorrect use is prevented in advance by the BMS.

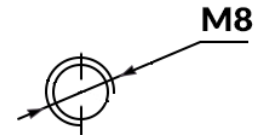
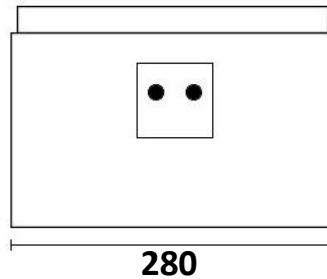
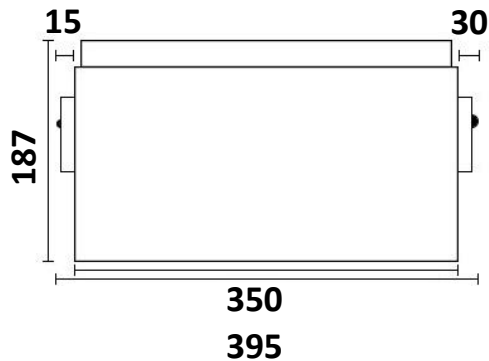


**Bluetooth App Download**  
<https://liontron.de/smartbms>



## Technical data

### LIONTRON LiFePO<sub>4</sub> Smart BMS 12.8V 150Ah under seat



Connection: M8

Model	LIDUCSM12150LX
EAN / GTIN	4260586370232
Rated capacity	150Ah / 1920Wh
Voltage range	11.0 .. 14.6V
Rated voltage	12.8V
Cycle life	≥3000 at 90% DoD
Charge characteristic	CCCV / IU
Bulk voltage	14.2 – 14.6V
Float voltage	13.5 – 13.8V
Recommended max. charge current	75A
Max. charge current	150A
Max. discharge current	150A
Pulse discharge current (≤20Sek.)	200A
Battery Management System	integrated
Monitoring	Bluetooth 4.0 with Smartphone App
Application	12V installation, parallel connection only
Protection class	IP65
Temperature (discharge)	-20°C .. +60°C
Temperature (charge)	0°C .. +45°C
Temperature (storage)	-40°C .. +60°C
Arctic Upgrade	optional, for usage up to -30°C
Terminal	M8, screw
Pole arrangement	Positive pole left
Warranty	5 years manufacturer warranty
Weight	21.0 kg
Dimensions (L x W x H) in mm	395 x 280 x 187